

## Sistemi AIS

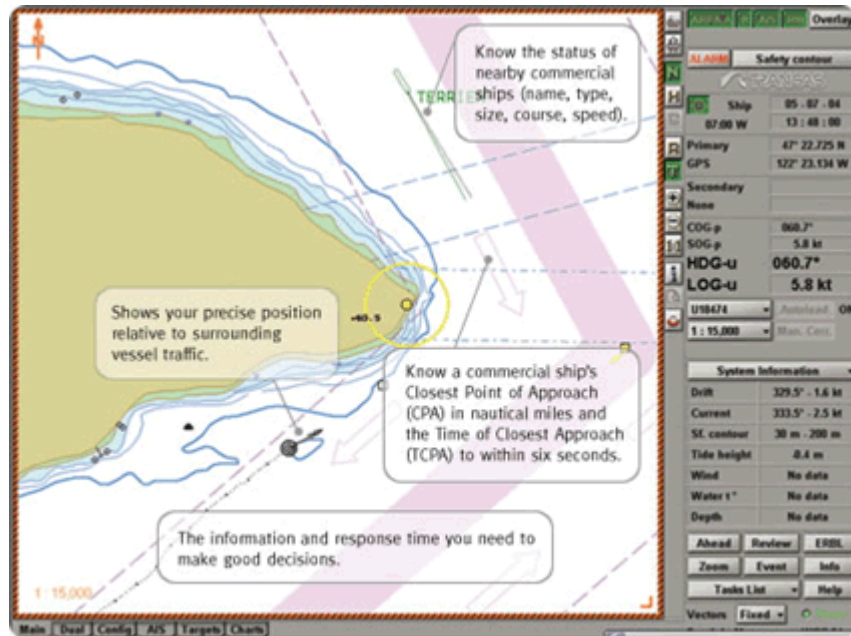
I sistemi SafePassageAIS della SeaCAS, disponibili in tre versioni - AIS<sub>100</sub>, AIS<sub>150</sub> e AIS<sub>300</sub> - , costituiscono una serie di Ricevitori AIS dual-band con ricevitore WAAS Differential GPS integrato e connettività seriale/USB, progettati per assicurare agli utenti l'intera gamma dei servizi per l'anti-collisione, l'ausilio alla navigazione in acque ristrette e ad intenso traffico o in condizioni meteo avverse previsti dalle normative e specifiche tecniche ed operative internazionali fissate per lo standard Automatic Identification System (IMO, NMEA, IEC ecc). Le avanzate tecniche progettuali e costruttive impiegate rendono i Ricevitori AIS SeaCAS una soluzione affidabile, versatile, di semplice installazione e compatta, ideale per tutte le applicazioni, a terra e a bordo. Alle elevate caratteristiche prestazionali (completa copertura dello standard, elevatissime sensibilità per lunghe portate ecc.) si aggiungono il rispetto dei più stringenti requisiti EMI/EMC, la compatibilità con tutti i SW di navigazione ed i sistemi di rappresentazione dati specifici e Personal Computer disponibili sul mercato, l'espandibilità e la possibilità di essere facilmente integrato in sistemi di navigazione per le più svariate applicazioni e di diversa complessità. Il tutto a condizioni economiche assolutamente concorrenziali.

Gli elevati standard tecnici del sistema ne hanno consentito l'adozione da parte della Boeing per l'utilizzo sui velivoli AWACS come supporto durante le prove di volo, con eccellenti risultati

Avionica SpA è in grado di garantire la fornitura dei sistemi completi di eventuali accessori, la progettazione dell'installazione, la sua applicazione, l'integrazione del sistema stand-alone o con altri sistemi nonché l'assistenza tecnica ed un completo supporto post-vendita per rispondere ad ogni specifica esigenza del cliente, sia privato che governativo. Il tutto, con tempi di consegna del sistema "chiavi in mano" estremamente contenuti.

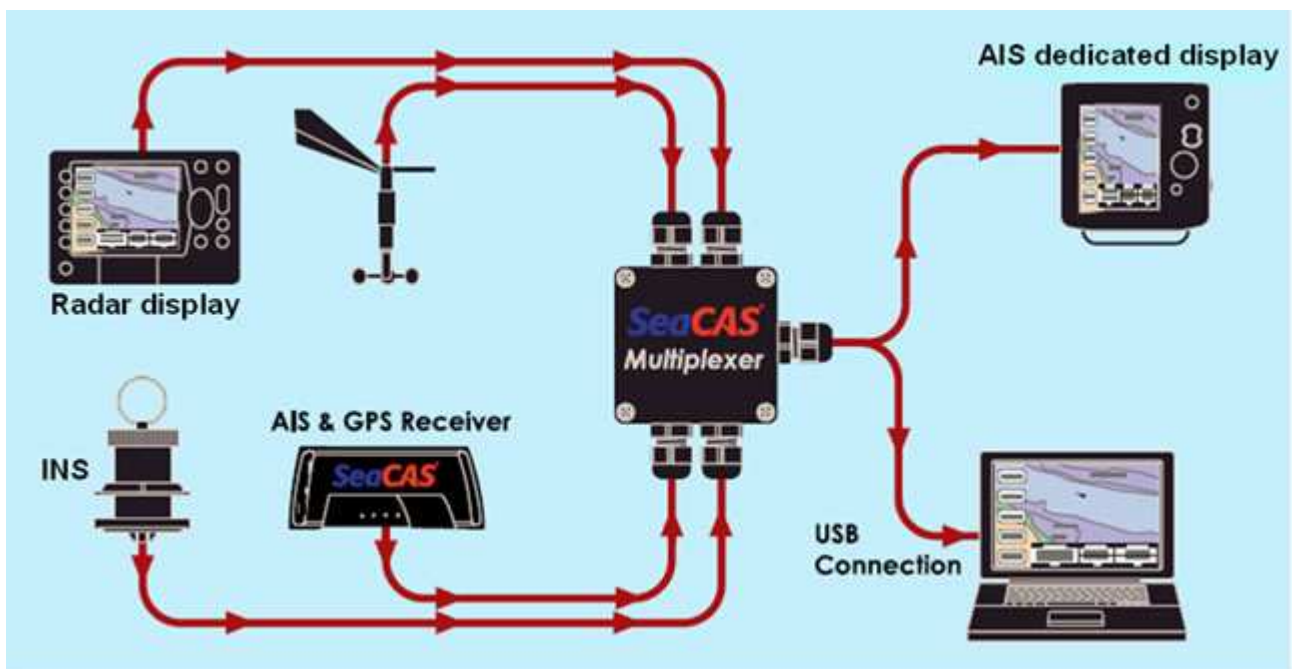


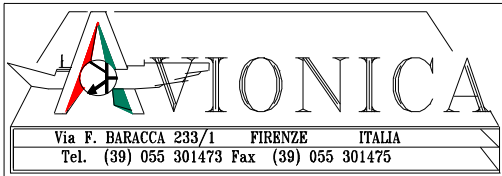
## AIS Ready Navigation Software



SeaCAS SafePassage AIS as displayed using AIS-ready navigation software.

## Espandibilità e integrabilità






## SW di navigazione compatibile con i sistemi SEACAS SafePassage AIS

The CAPN  
 Fugawi Marine ENC  
 Nobeltec Admiral  
 Rosepoint Navigation Coastal Explorer  
 MaxSea Navigator+ Commander Explorer Professional  
 Digiboat's Software on Board (SOB)  
 GPSNavX & MacENC  
 Euronav seaPro UAIS  
 ICAN Regulus Aldebaran  
 Chartworx TheMap Yachting  
 Nobeltec VNS version 8.0  
 NavSim BOATCRUISER  
 Global Navigation's NavPak  
 Maptech Chart Navigator Pro  
 Transas Marine Navi-Sailor  
 Sea Clear II  
 P-Sea WindPlot II  
 Tridentnav ECS Standard  
 TIKI Navigator

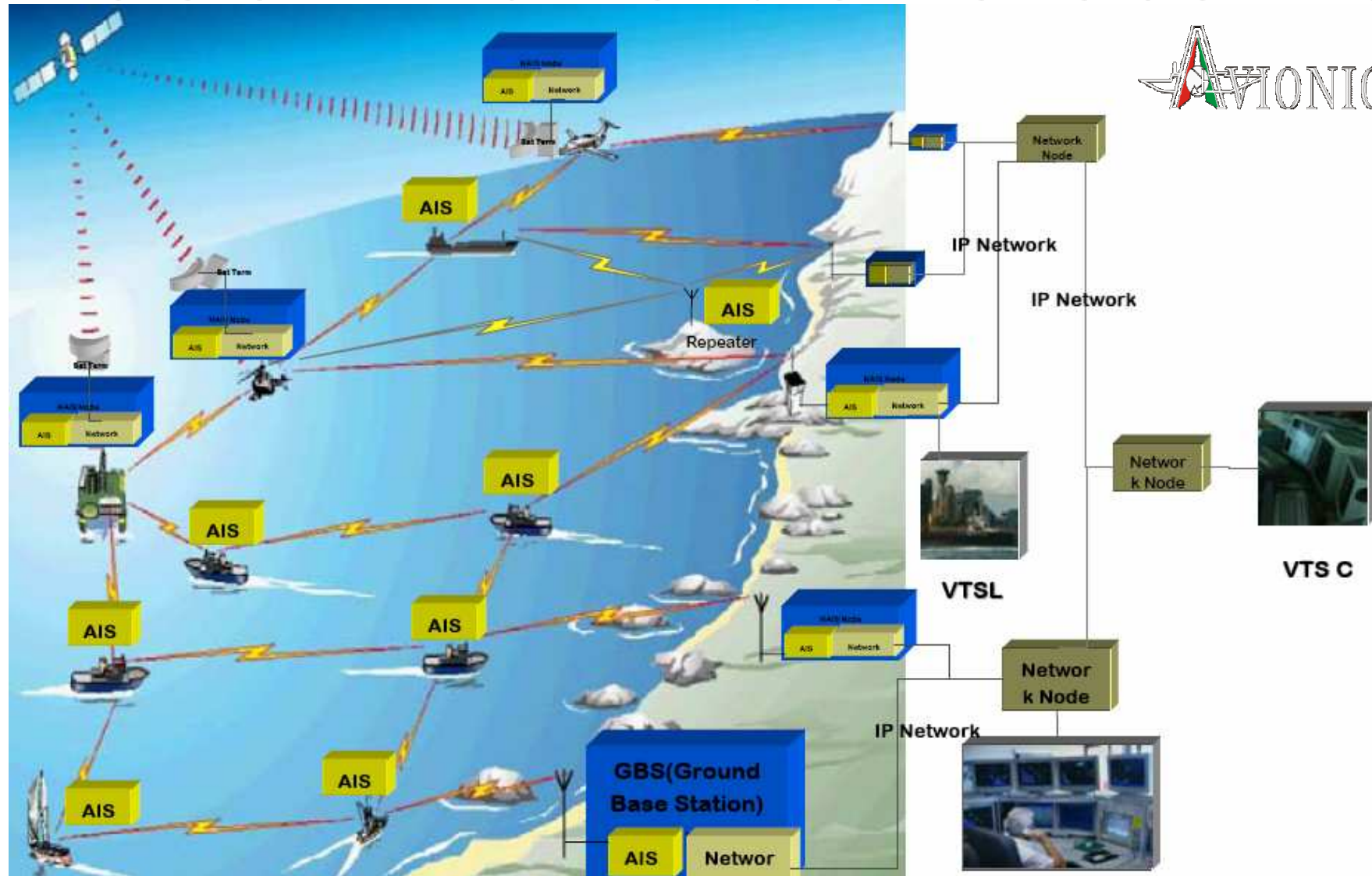
## Chart Plotter compatibili con i sistema SEACAS SafePassage AIS

FURUNO NavNet vx2  
 SI-TEX ColorMax  
 Lorenz Electronics Excalibur World Map  
 SEIWA BARRACUDA NAUTILUS BARRAMUNDI  
 VDO Map Chart Plotters  
 JRC JMA-5300  
 Raymarine E-Series & C-Series  
 Garmin GPSMAP 392, 398, 492, 498, 2206, 2210, 3205, 3206, 3210 and all 2007 models.  
 FURUNO Chart Plotter GP7000/NT and Chart Plotter & Fish Finder GP7000F/NT  
 Standard Horizon CPV350, CP180, CP300, CP180i, CP155C, CP175C, CP1000C, CP500 all with software V. 11.06  
 NAVMAN 8120, 8084, 5607 & 5507  
 NORTHSTAR M121 and M84

## Configurazione

SafePassageAIS	100	150	300
Dual-Band AIS Receiver	X	X	X
GPS		X	X
USB Connectivity 	X	X	X
Serial Connectivity	X	X	X
AIS Antenna			X
GPS Antenna		X	X
Antenna Cable (10m)		X	X

# Descrizione del sistema



## SeaCAS® SafePassageAIS 300, 150 & 100 models

Dual-Band AIS Receiver with USB Connectivity

### Product specifications

Specifications are for all models, unless otherwise noted

- Lightweight, compact design
- Fast, easy USB connectivity
- Rugged and waterproof fiberglass tube resistant to saltwater, vibration per IEC 60945 (applies to 300 model only)
- Low 1.2 watt power consumption
- Receives data from as far away as 30 nautical miles
- 16-channel GPS, WAAS and EGNOS enabled (300 and 150 models only)
- Dual frequency: AIS1 161.975 MHz and AIS2 162.025 MHz simultaneously monitored
- 25 kHz bandwidth
- Baud rate 38400 pbs
- EMC certified EN61000-6-3:2001, EN61000-6-1:2001, IEC 60945
- Receives all AIS VDL messages simultaneously on both channels
- Uses industry standard IEC 61162-2/NMEA 0183 message protocol
- 10-meter antenna cable (maximum cable length of 30 meters is available)
- Operating temperature ranges from 5 to 131 degrees Fahrenheit
- Sensitivity to -107 dBm
- GMSK demodulation
- 70 dB adjacent channel rejection
- SafePassageAIS is PC- and Mac-compatible
- SafePassage comes with a serial cable for chartplotter and radar connectivity

### Compatibility

Fully compatible with all major navigation systems. Compatible with most radar and chartplotter systems, as more and more of these systems are designed to be AIS-ready. Visit [www.SeaCAS.com](http://www.SeaCAS.com) for an updated list of AIS-ready software, radar and chartplotters.

### Convenient ordering options

- Find a SeaCAS® dealer near you. Go to: [www.SeaCAS.com](http://www.SeaCAS.com) or send an e-mail with your ZIP code or postal code to [custsvo@SeaCAS.com](mailto:custsvo@SeaCAS.com)
- Online: [www.SeaCAS.com](http://www.SeaCAS.com)
- By mail: Send your order to the address listed below.

### Technical support at no extra charge

Our friendly, knowledgeable staff are ready to answer your questions via e-mail at [custsvc@SeaCAS.com](mailto:custsvc@SeaCAS.com). Installation instructions and FAQs are available online at [www.SeaCAS.com](http://www.SeaCAS.com). For connection issues with your navigation system, please contact the system vendor.

### Warranty information

SeaCAS® warrants its products to be free from defects for one full year from the date of purchase. SeaCAS® will, at its sole discretion, repair or replace any components that fail in normal use. Labor and material costs for such repairs or replacement will be free of charge. This warranty does not cover failures due to abuse, misuse, accidents or unauthorized alterations or repairs.

**SeaCAS®**  
Collision Avoidance at Sea

SeaCAS®, L.L.C.  
22604 160th Ave S  
Kent, WA 98142-4844

206.851.7664  
[custsvo@SeaCAS.com](mailto:custsvo@SeaCAS.com)  
[www.SeaCAS.com](http://www.SeaCAS.com)

Specifications are subject to change without notice. The SeaCAS logo and the SeaCAS name are registered trademarks of SeaCAS®, L.L.C. The "AIS-ready" via USB & GPS Receiver™ is a SeaCAS®, L.L.C. design copyright. Patent pending.

# SeaCAS® SafePassageAIS

Advanced collision avoidance system for real-time safety

Don't cross a shipping channel without one



**SeaCAS®**  
Collision Avoidance at Sea

**NEW!**  
150 and 100 models

# Navigate with confidence

## SafePassageAIS 300, 150 & 100

The state-of-the-art SeaCAS® SafePassageAIS is the single most important safety feature you can add to your vessel to avoid collisions at sea. You'll have real-time information about nearby commercial vessels, including course, speed, vessel name, radio call sign and more.

SafePassageAIS 300 (shown here)

Differential GPS technology accurately indicates your location (300 and 150 models only)

Highly sensitive 55-inch antenna has a range of up to 30 nautical miles (300 model only)

The SeaCAS® SafePassage uses your existing AIS compatible Navigation System (see back page) to display information graphically.

AIS technology gives you visibility around capes, river bends and other ships.

Compact dual-frequency receiver decodes all AIS transmissions.

Easy mounting using any standard marine antenna mount. (300 model only; mounting hardware not included.)

All SeaCAS® SafePassage models include a USB cable and driver for fast connectivity to your PC or Mac, and a serial cable to interface with your chartplotter or radar.

Includes a 10-meter cable (300 and 150 models only).

Uses industry standard IEC 61162-2/NMEA 0183 output format.

Power is supplied through the USB port, eliminating the need for a separate power cable.

SeaCAS® SafePassageAIS as displayed using electronic chart system software.

Know the status of nearby commercial ships (name, type, size, course, speed).

Shows your precise position relative to surrounding vessel traffic.

Know a commercial ship's Closest Point of Approach (CPA) in nautical miles and the exact Time of Closest Approach to within six seconds.

Information that saves lives

Updated every 2 to 10 seconds\*

- Position
- Course over ground (COG)
- Speed over ground (SOG)
- Heading
- Rate-of-turn

\*Varies depending on speed and rate-of-turn

Updated every 5 minutes

- Name
- Ship type
- Call-sign
- Destination
- ETA
- Length
- Breadth
- Draft

## Which model is right for you?

### SafePassageAIS 300

Do you need GPS for your PC or Mac-based navigation software? Do you want to add a sophisticated AIS collision avoidance system? The 300, our most popular product, is an ideal choice with its all-in-one AIS via USB & dGPS receiver.



### SafePassageAIS 150 **NEW!**

The 150 will give you the same AIS collision avoidance performance and GPS capability as the 300, but uses your owner-supplied AIS antenna.

You'll save money and space with the 150. A GPS antenna is included with the 150 model.



### SafePassageAIS 100 **NEW!**

If you want to add the best in AIS technology to your existing navigation system, but don't need GPS or an AIS antenna, then the 100

is a perfect cost-saving option for you.

SafePassageAIS	300	150	100
Dual-Band AIS Receiver	x	x	x
GPS	x	x	
USB Connectivity	x	x	x
Serial Connectivity	x	x	x
AIS Antenna	x		
GPS Antenna	x	x	
Antenna Cable (10m)	x	x	

### What is AIS technology?

To read more about the power of AIS technology, visit [www.SeaCAS.com](http://www.SeaCAS.com).